

Healthy La Honda

Where we live, learn, work, and play profoundly shape our ability to be healthy.

Place impacts health by shaping the choices made available to us – and whether *the healthy choice is the easy choice* – through social, economic, and environmental factors known as social determinants of health.

These determinants of health are responsible for health inequities, or preventable differences in health outcomes among populations. By building healthy, equitable communities that address these disparities, we can ensure that everyone has equitable opportunities to live a long and healthy life.

The Healthy Cities SMC profile is a snapshot of indicators for San Mateo County residents and the places they live, work and play. These measures help us understand the types of opportunities a city has to support health and why some places are healthier than others. Understanding why people in some cities live longer and have more opportunities to be healthy helps us identify what is working and what can be improved.

Indicators are organized by key priority areas identified through the [2015 strategic planning](#)

[process](#) for how to create healthy, equitable communities in San Mateo County: [Healthy Housing](#), [Healthy Neighborhoods](#), [Healthy Schools](#), and [Healthy Economy](#). [Demographic data](#) is also provided in each profile. [Health data](#) is available through the San Mateo County Health System.

To see how La Honda compares to other cities in San Mateo County, visit [Healthy Cities SMC](#).

About Get Healthy San Mateo County

Get Healthy San Mateo County (GHSMC) is a community collaborative of community-based organizations, County agencies, cities, schools, hospitals, and leaders working together to advance healthy, equitable communities in San Mateo County. GHSMC uses policy change to prevent diseases and ensure everyone has equitable opportunities to live a long and healthy life. The collaborative is facilitated by the San Mateo County Health System.

GHSMC supports the advancement of the [10 essential public health services](#) as defined by the Centers for Disease Control and Prevention. Learn more at www.GetHealthySMC.org.

Demographics

It is important to know who lives in our community to understand how to best meet the diverse health, social, and economic needs of all residents.



Demographic Indicators	La Honda	San Mateo County
Total Population¹	518	754,748
Age¹		
0-17 years	6%	22%
18-64 years	60%	64%
65+ years	34%	15%
Median age	55 years	40 years
Race/Ethnicity¹		
American Indian/Alaska Native	2%	Less than 1%
Asian	%	27%
Black	1%	2%
Latino	1%	25%
Pacific Islander	3%	1%
White	94%	40%
Other	Less than 1%	Less than 1%
Two or More Races	Less than 1%	4%
Limited English-Speaking Households¹	3%	9%

¹Source: U.S. Census Bureau, 2012-2016 American Community Survey 5-year Estimates



Stable and affordable housing protects health and provides the ability to engage in healthy opportunities. People who live in healthy, affordable places live longer, healthier lives.

Healthy Housing Indicators	La Honda	San Mateo County
Median Rent ¹	\$1,574	\$1,830
Percent of Households Who Are Rent Burdened ^{1,2}	92%	52%
Percent of Households Occupied by Homeowner ¹	65%	59%
Percent of Households Who Are Overcrowded ¹	Less than 1%	8%
Percent of Regional Housing Needs Allocation for Very Low Income Households ³	Data not available	20%
Number of Low-wage Jobs for Every One Affordable Housing Unit ⁴	Data not available	6
Percent of Employees that Don't Live Where They Work ⁵	97%	63%

¹Source: U.S. Census Bureau, 2012-2016 American Community Survey 5-year Estimates

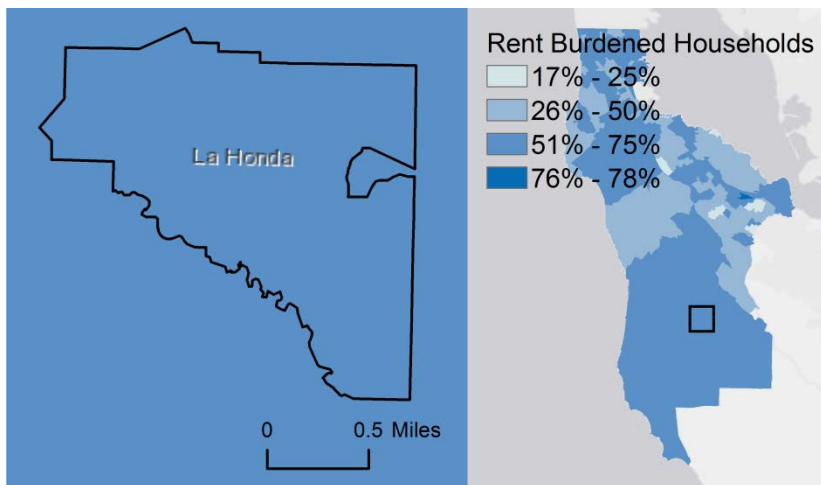
²Note: Rent burden refers to households that spend 30% or more of their income on rent and other housing costs.

³Note: The Regional Housing Needs Allocation (RHNA) is a state-required process to determine the number of housing units needed by income level in each city. Source: Association of Bay Area Governments, 2007-2014 Regional Housing Need Allocation

⁴Source: UC Davis Center for Regional Change, 2013 Regional Opportunity Index

⁵Note: Percent of employees that don't live where they work refers to employees that do not live in the same city/county they work in. Source: U.S. Census Bureau, 2015 Longitudinal Employer-Household Dynamics

Percent of Households with Rent Burden in La Honda by Census Tract



Rent burden refers to households that spend 30% or more of their income on rent and other housing costs. Paying unaffordable housing costs diverts wages away from other important needs, such as health care and healthy food, making it more difficult to be healthy.

Source: U.S. Census Bureau, 2012-2016 American Community Survey 5-year Estimates



Complete neighborhoods make it easy for residents to be healthy every day in their communities by making the healthy choice, the easy choice. Living near where you work and send your kids to school enables many opportunities for health. Creating vibrant complete neighborhoods allows people to safely walk and bike, purchase daily goods and services such as healthy foods, and easily access affordable public transportation, parks and open space.

Healthy Neighborhoods Indicators	La Honda	San Mateo County
Percent of Income for Average Transportation Costs for Block Groups Within ½ Mile of Transit ¹	Data not available	17%
Percent of Residents Who Take Active Transportation to Work ^{2,3}	4%	14%
Number of Daily Vehicle Miles Traveled Per Capita ⁴	Data not available	26
Number of Bicycle and Pedestrian Collisions Per 100,000 People ⁵	0	53
Number of Severe or Fatal Bicycle and Pedestrian Collisions Per 100,000 People ⁵	0	45
Percent of Households Enrolled in Food Stamps ²	Less than 1%	4%
Number of Park Acres Per 1,000 People ⁶	0	1

¹Source: Center for Neighborhood Technology, 2018 AllTransit

²Source: U.S. Census Bureau, 2012-2016 American Community Survey 5-year Estimates

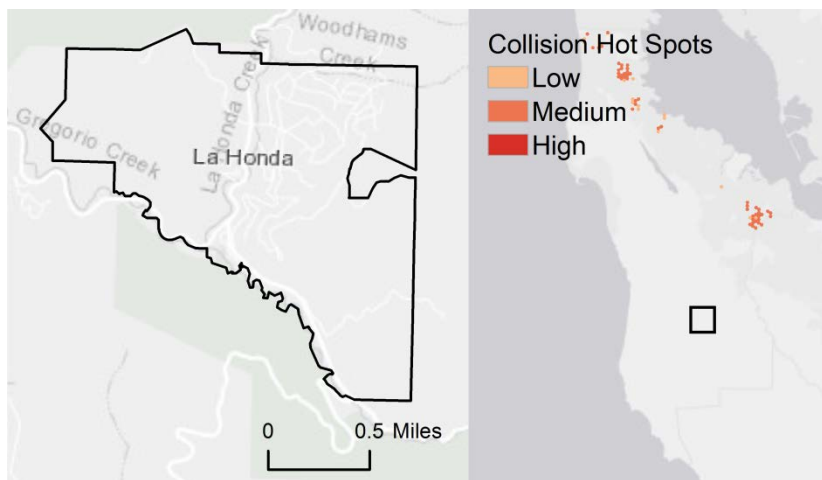
³S Note: Active transportation includes walking, biking, and taking public transit.

⁴Sources: Caltrans Highway Performance Monitoring System, 2015 California Public Road Data; U.S. Census Bureau, 2012-2016 American Community Survey 5-year Estimates

⁵Sources: UC Berkeley Transportation Injury Mapping System, 2016 Statewide Integrated Traffic Records System; U.S. Census Bureau, 2012-2016 American Community Survey 5-year Estimates

⁶Sources: San Mateo County GIS, 2018 Parks and Beaches; U.S. Census Bureau, 2012-2016 American Community Survey 5-year Estimates

Bike & Pedestrian Collision Hot Spots in La Honda



Bike and pedestrian collisions are collisions that involve bicyclists and/or pedestrians; most usually involve a motor vehicle as well. Collision hot spots are areas with clusters of collisions. Bike and pedestrian collisions can cause injuries and fatalities and contribute to motor vehicle accidents.

Source: UC Berkeley Transportation Injury Mapping System, 2016 Statewide Integrated Traffic Records System



High-quality education creates pathways to better health.

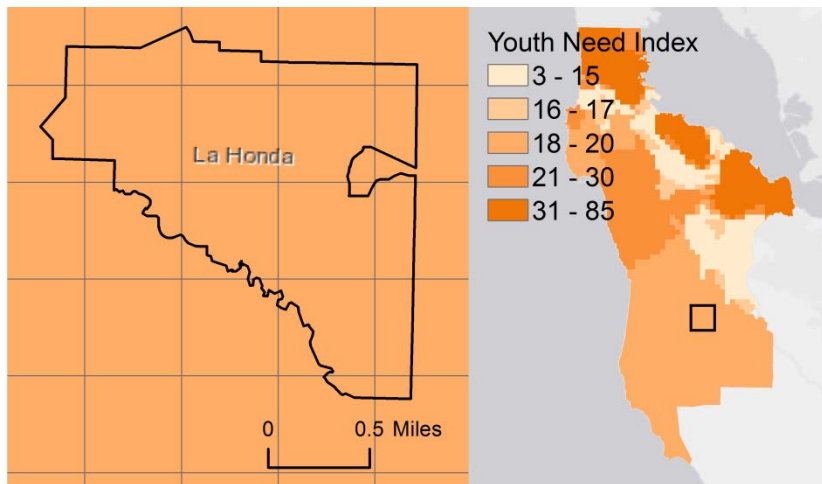
Education is one of the top determinants of health outcomes, and can set the stage for a child’s future opportunities to access health promoting prospects such as jobs and stable housing.

Healthy Schools Indicators	La Honda	San Mateo County
Youth Need Index ¹	19	24
Percent of Adults with a High School Degree or Less ²	25%	27%
Percent of Adults with a Bachelor’s Degree or Higher ²	44%	47%

¹Note: Score is out of 100 points possible where higher score indicates higher need. Source: San Mateo County Health System, Office of Epidemiology and Evaluation, 2017

²Source: U.S. Census Bureau, 2012-2016 American Community Survey 5-year Estimates

Youth Need Index in La Honda



The Youth Need Index reflects a combination of factors that impact youth success where higher scores (out of 100 total) indicate higher need. Data include Juvenile Probation and Behavioral Health hot spots, child maltreatment, low birthweight, student reading proficiency, suspensions and poverty.

Source: San Mateo County Health System, Office of Epidemiology and Evaluation, 2017



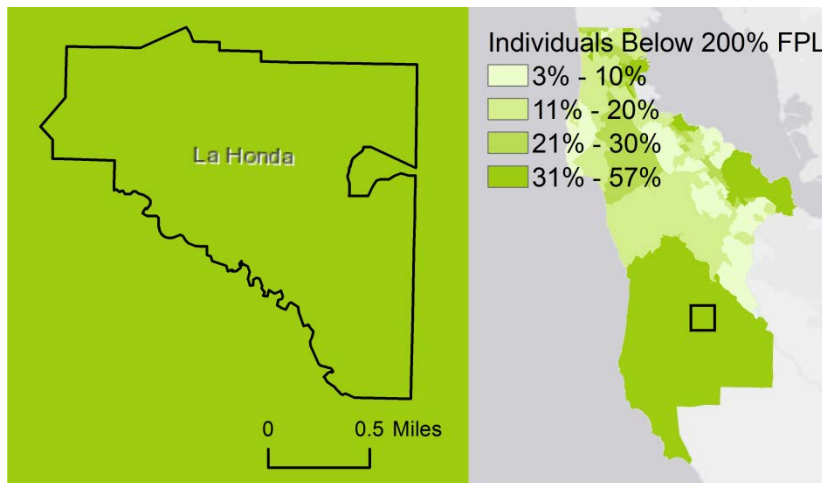
A strong local economy builds household financial security for all and promotes everyone's health. Access to income and wealth is one of the most important predictors of a person's health. The less money a person makes, the less opportunity they have to be healthy. Financial insecurity makes it difficult to afford and meet basic needs, leading to higher rates of depression and stress, and subsequently more health problems.

Healthy Economy Indicators	La Honda	San Mateo County
Median Household Income ¹	Data not available	\$98,546
Per Capita Income ¹	\$61,185	\$50,262
Income Inequality ^{1,2}	0.45	0.49
Unemployment Rate ¹	8%	6%
Percent of Residents Living below Federal Poverty Level ¹	13%	8%
Percent of Residents Living below 200% of the Federal Poverty Level ¹	29%	20%

¹Source: U.S. Census Bureau, 2012-2016 American Community Survey 5-year Estimates

²Note: Income inequality is represented by the Gini Index, where a score of 0 represents complete equality and a score of 1 represents complete inequality.

Percent of Residents Living below 200% of the Federal Poverty Level in La Honda by Census Tract



Poverty has a significant impact on health status and outcomes; individuals with lower incomes report poorer health and higher risk of disease. The Federal Poverty Level (FPL) is the standard measure based on household size and income.

Source: U.S. Census Bureau, 2012-2016 American Community Survey 5-year Estimates